

JUST RIGHT GALAXY

Design For Redemption

SUNDAY LECTURE SERIES

By Dr. Hugh Ross, Astrophysicist



These are live lectures and are followed by Questions & Answers. Presentations are at high school to graduate level. Dr Ross travels widely to lecture. We are glad that he is based here. He has authored over 20 wonderful books, and is working on more. Refreshments are served.

Day: Sundays

Time: 12:30 pm

Location:

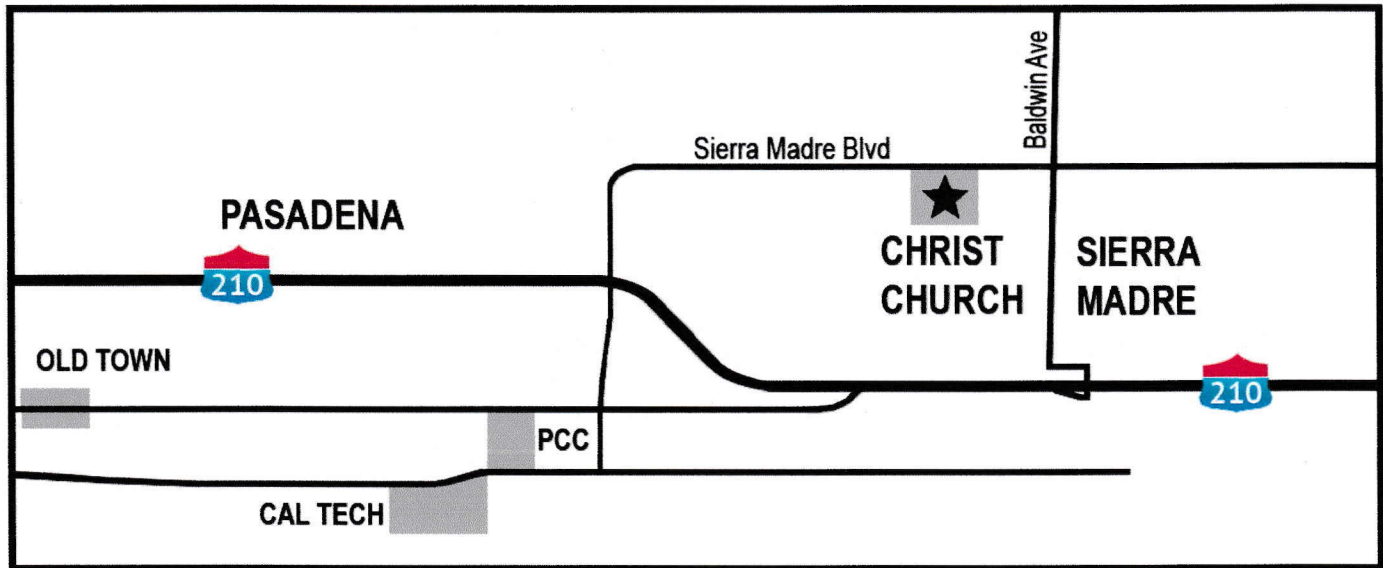
Christ Church Sierra Madre
170 W. Sierra Madre Blvd
Sierra Madre CA 91024

(Lecture is held in Basement Hall. Enter from the Parking Lot)

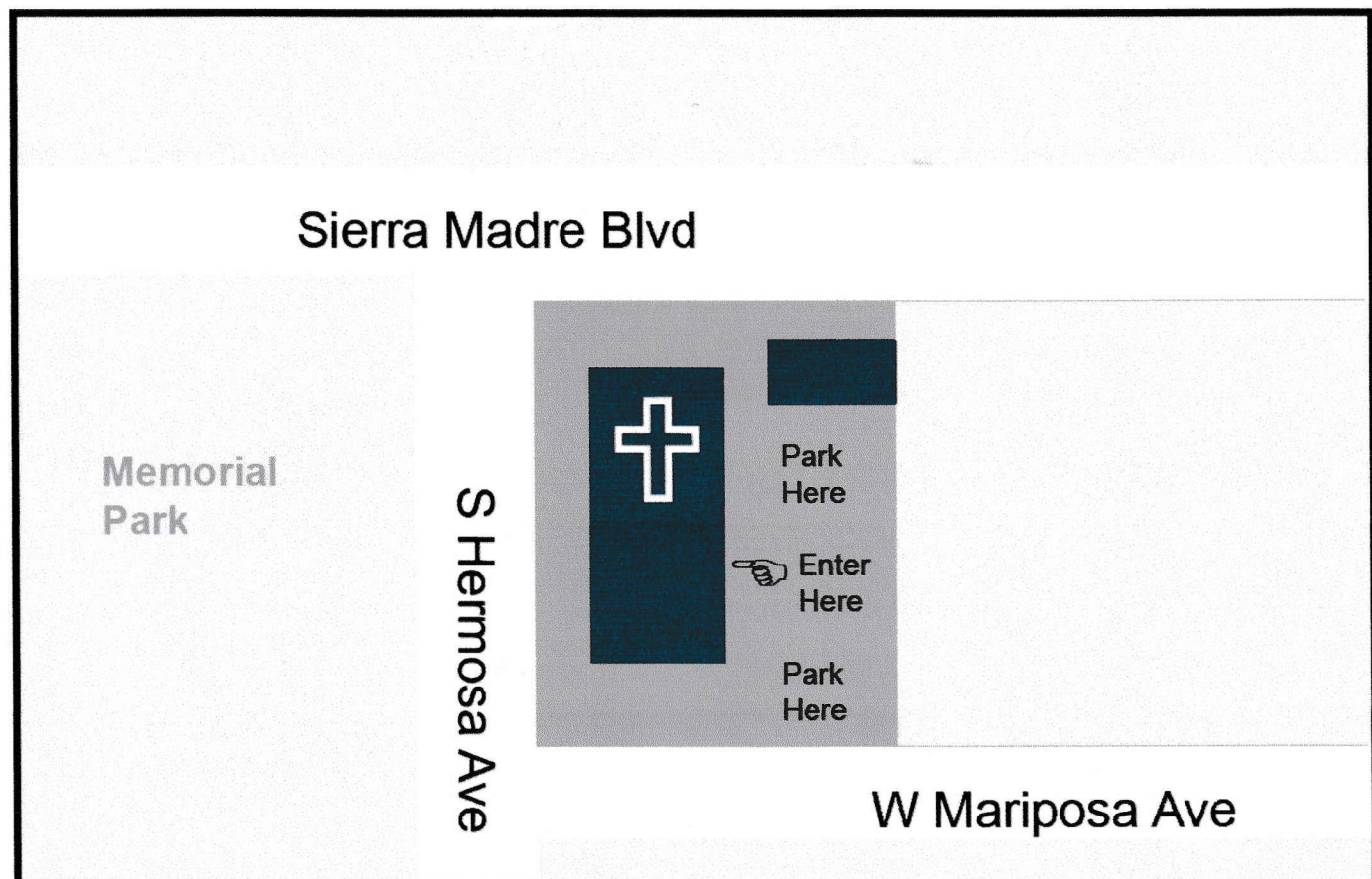
Or watch live at paradoxes.org & enter live into the Q & A.

Paradox Class
Sundays 12:30
Q&A Time

At: Christ Church Sierra Madre
170 W. Sierra Madre Blvd
Sierra Madre CA 91024



If you use the 210 Fwy, you can exit onto Sierra Marde Blvd or Baldwin Ave.



The Parking Lot Spaces usually open up from 12 noon to 12:30 pm,
and also there is plenty of street parking.

JUST RIGHT GALAXY Design for Redemption SUNDAY LECTURE SERIES By Dr. Hugh Ross, Astrophysicist



This is a live lecture and open to the public.
Presented at high school to graduate level.
Dr Ross travels widely and often to speak, and
he has authored over a dozen wonderful books.
Refreshments are served. Questions are welcome.

Day: Sundays Time: 12:30 pm
Location: Christ Church Sierra Madre
170 W. Sierra Madre Blvd
Sierra Marde CA 91024
(In the Basement Hall. Enter from the Parking Lot)
paradoxes.org *AMPLE PARKING IN LOT*

JUST RIGHT GALAXY Design for Redemption SUNDAY LECTURE SERIES By Dr. Hugh Ross, Astrophysicist



This is a live lecture and open to the public.
Presented at high school to graduate level.
Dr Ross travels widely and often to speak, and
he has authored over a dozen wonderful books.
Refreshments are served. Questions are welcome.

Day: Sundays Time: 12:30 pm
Location: Christ Church Sierra Madre
170 W. Sierra Madre Blvd
Sierra Marde CA 91024
(In the Basement Hall. Enter from the Parking Lot)
paradoxes.org *AMPLE PARKING IN LOT*

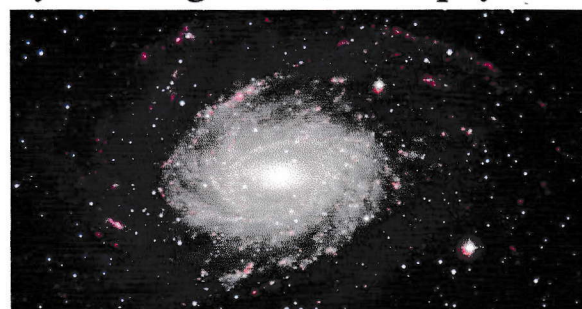
JUST RIGHT GALAXY Design for Redemption SUNDAY LECTURE SERIES By Dr. Hugh Ross, Astrophysicist



This is a live lecture and open to the public.
Presented at high school to graduate level.
Dr Ross travels widely and often to speak, and
he has authored over a dozen wonderful books.
Refreshments are served. Questions are welcome.

Day: Sundays Time: 12:30 pm
Location: Christ Church Sierra Madre
170 W. Sierra Madre Blvd
Sierra Marde CA 91024
(In the Basement Hall. Enter from the Parking Lot)
paradoxes.org *AMPLE PARKING IN LOT*

JUST RIGHT GALAXY Design for Redemption SUNDAY LECTURE SERIES By Dr. Hugh Ross, Astrophysicist

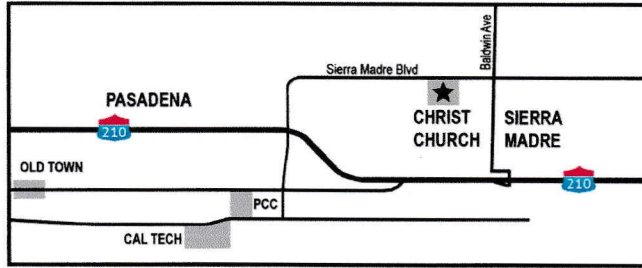


This is a live lecture and open to the public.
Presented at high school to graduate level.
Dr Ross travels widely and often to speak, and
he has authored over a dozen wonderful books.
Refreshments are served. Questions are welcome.

Day: Sundays Time: 12:30 pm
Location: Christ Church Sierra Madre
170 W. Sierra Madre Blvd
Sierra Marde CA 91024
(In the Basement Hall. Enter from the Parking Lot)
paradoxes.org *AMPLE PARKING IN LOT*

Paradox Class
Sundays 12:30
Q&A Time

At: Christ Church Sierra Madre
170 W. Sierra Madre Blvd
Sierra Madre CA 91024



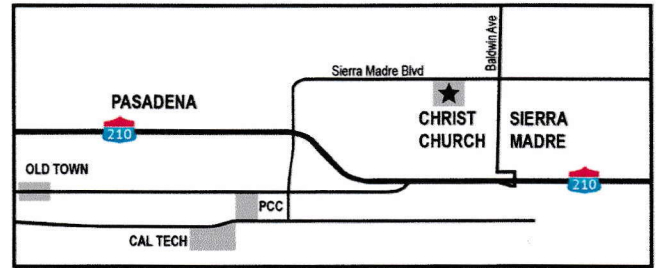
If you use the 210 Fwy, you can exit onto Sierra Marde Blvd or Baldwin Ave.



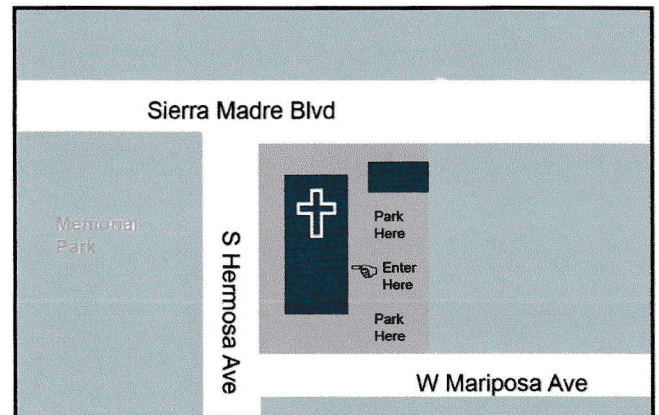
The Parking Lot Spaces usually open up from 12 noon to 12:30 pm, and also there is plenty of street parking.

Paradox Class
Sundays 12:30
Q&A Time

At: Christ Church Sierra Madre
170 W. Sierra Madre Blvd
Sierra Madre CA 91024



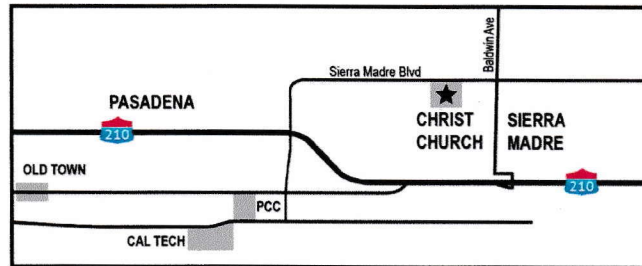
If you use the 210 Fwy, you can exit onto Sierra Marde Blvd or Baldwin Ave.



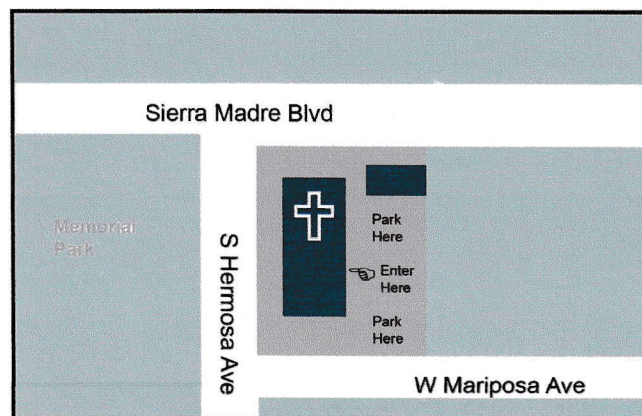
The Parking Lot Spaces usually open up from 12 noon to 12:30 pm, and also there is plenty of street parking.

Paradox Class
Sundays 12:30
Q&A Time

At: Christ Church Sierra Madre
170 W. Sierra Madre Blvd
Sierra Madre CA 91024



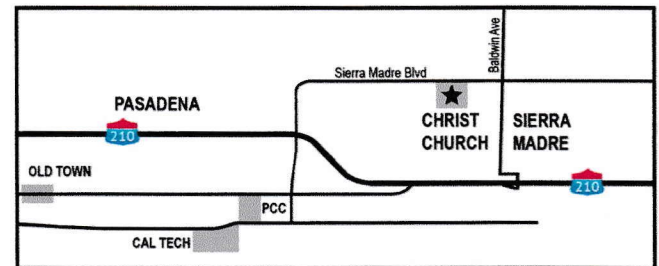
If you use the 210 Fwy, you can exit onto Sierra Marde Blvd or Baldwin Ave.



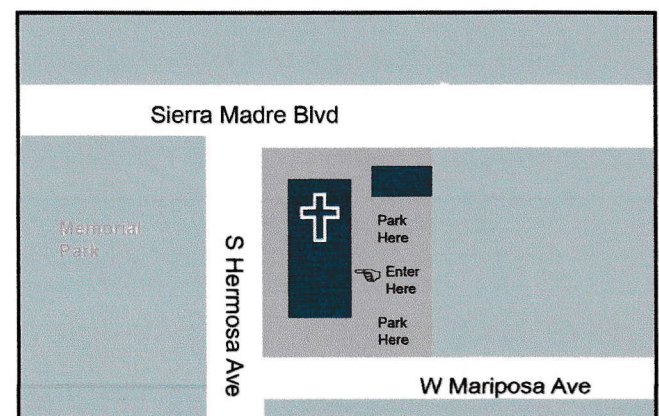
The Parking Lot Spaces usually open up from 12 noon to 12:30 pm, and also there is plenty of street parking.

Paradox Class
Sundays 12:30
Q&A Time

At: Christ Church Sierra Madre
170 W. Sierra Madre Blvd
Sierra Madre CA 91024



If you use the 210 Fwy, you can exit onto Sierra Marde Blvd or Baldwin Ave.



The Parking Lot Spaces usually open up from 12 noon to 12:30 pm, and also there is plenty of street parking.